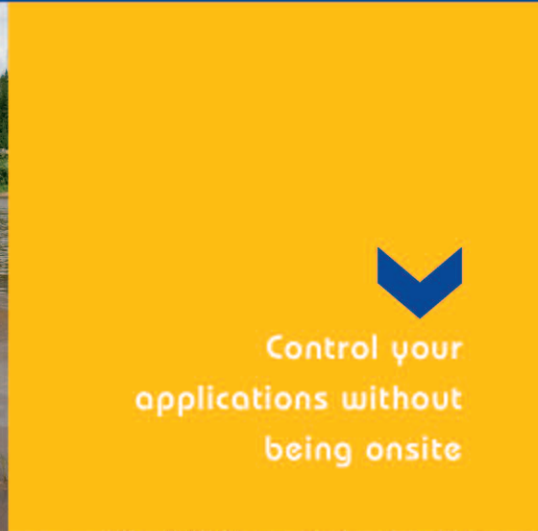


# Remote Monitoring & Control



Control your applications without being onsite



INNOVATIVE DATA LOGGING AND CONTROL TECHNOLOGY

USES STANDARD MOBILE TELEPHONE NETWORKS

PROVIDES AFFORDABLE, LOW COST SOLUTIONS





## BENEFITS OF REMOTE MONITORING AND CONTROL FROM e-RPM



### Innovative, low cost technology

e-RPM technology enables users to remotely monitor processes in circumstances where cost is a key consideration.

Communication is by standard mobile phone networks and will appeal to managers who are unable to justify investment in more expensive SCADA systems, fixed lines and dedicated hand-held devices.

### Immediate message alerts

Nominated users can manually interrogate on/off status and analogue readings at any time, alternatively, users can be automatically sent updates at predetermined times or frequencies.

Alerts are immediately communicated to nominated recipients as SMS messages or emails whenever process parameters are exceeded.

### Take action remotely

Process controls can be triggered via commands communicated by mobile phone, laptop or PC, e.g. start a pump or close a valve. Upper and lower parameters can be reset remotely, so that the system continues to control automatically against new settings.

### Camera monitoring

e-RPM provides a camera and communications package that allows still images to be accessed by laptop or PC.

### Avoid expensive process failure

e-RPM's affordable technology makes it possible for managers to introduce remote process monitoring in circumstances where, until now, routine visits to site have been the only realistic option.

### Reduce incidence of site visits

Status and condition reporting using e-RPM's remote technology enables the frequency of inspection visits to be reduced. Using e-RPM remote monitoring, visits are made only when the system identifies a requirement, permitting huge savings in technician time and travelling costs.

### Satellite tracking

e-RPM technology includes GPS tracking as an optional facility .

### Demonstrate compliance

e-RPM technology greatly minimises the task of logging and retaining data for the purposes of preparing compliance reports. Analogue readings and records of events are communicated to the user's own Virtual Control Panel located on the e-RPM web site.





# MONITORING AND CONTROL FROM e-RPM

## Remote On/Off Control

On/off status of process controls can be remotely interrogated and control parameters overridden e.g. switch off drive.

**Monitoring Capacity** 3 on/off input variables

**Control Capacity** 3 outputs controls

## Remote On/Off + Analogue Control

This package is additionally able to capture analogue readings and automatically communicate alerts when control parameters are exceeded.

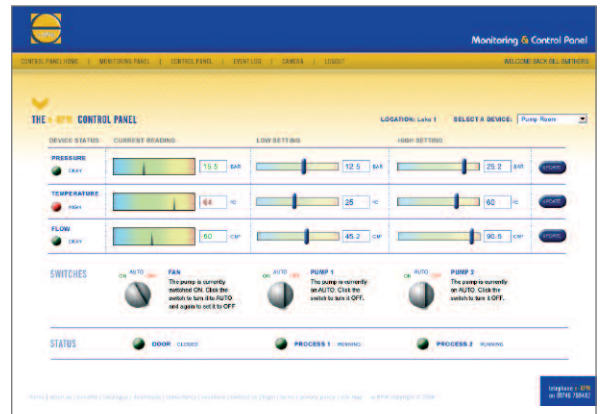
**Monitoring Capacity** 6 on/off inputs + 3 analogue inputs

**Control Capacity** 6 output controls

**Additional Capacity** ancillary controllers can be added

**Up to** 21 digital + analogue inputs, 12 output controls

(R/F connection to main controller can be used if required)



Unique Virtual Control Panel

## Satellite Tracking Option

A communicator box can be supplied that has GPS monitoring facilities.

## Remote Datalogging + Download

In addition to the functionality above, analogue readings and digital events can be communicated, stored, and downloaded as permanent records.

**Includes unique e-RPM Visual Control Panel - web accessed**

Single or multi-users can view in real time mode the status of individual digital and analogue variables.

Data histories and event logs can be accessed as graphical or tabular formats.

## Remote Camera Option

Camera facilities to remotely view still images of the location can be provided as an optional extra. This can be supplied as part of a control configuration, or installed as a stand-alone unit with its own integral communicator.



## Problem Diagnosis and site surveys

We can assist with initial problem diagnosis, undertake site surveys, prepare scheme drawings and specifications.



visit [remotelogger.co.uk](http://remotelogger.co.uk)  
for full specification



### Purchase or Rental Options

Packages can be supplied on an outright sales basis, or as a monthly rental option. The rental option includes remote problem diagnosis and service by our engineers, also site visits where necessary. There is a minimum rental period of 24 months.

### Installation

We provide a full installation and testing service. Where customers wish to handle their own installation, we can test remotely, once installed.

### Process Improvement Service

Where datalogging is installed as part of a process improvement exercise, e-RPM can provide a monitoring and interpretation service. We will analyse your data on a monthly basis, provide summary charts and graphs, and present a written report with detailed comments and recommendations.

### Facilities Management Service

e-RPM is able to provide a process supervision service on behalf of Facilities Managers. Under this service, we act as the first point of contact on a 24/7 basis, receiving any process alert messages and taking immediate control actions that may be necessary.

We will then contact the Facilities Manager to agree what further action may need to be taken.

### Applications

e-RPM technology can be applied to a huge variety of different industry sectors and applications.

● <b>Waste Management</b>	Landfill, Mining, Quarrying, Composting, Contaminated Land
● <b>Mobile Plant Hire</b>	Power Generation
● <b>Manufacturing</b>	Metal Finishing, Electronics, Food Processing
● <b>Agricultural</b>	Aquatic Farming
● <b>Service Providers</b>	Waste Management
● <b>Equipment</b>	Mobile Plant, Control & Sensory Equipment,
● <b>Manufacturers</b>	Environmental Protection Equipment, Suppliers to Hospitals
● <b>Facilities Management</b>	Facilities Management, Office Services
● <b>Consultants &amp; Advisers</b>	Metal Processing Industries, Construction Engineers Construction Companies, ISO 14000 Consultants



**If you have an application you would like to discuss please contact**

**e-RPM Ltd** PO Box 3858, Bridgnorth, Shropshire, WV16 4WX. United Kingdom

**Tel / Fax** (+44) 1746 768482 **Mobile** (+44) 7725 423273

**Email** [enquiries@e-rpmserv.com](mailto:enquiries@e-rpmserv.com) **Web** [www.remotelogger.co.uk](http://www.remotelogger.co.uk)

